

# Self Priming Centrifugal Pump

Models 16C2-F4L and 16C20-F4L



Size 6" x 6"



Total Head		Capacity Of Pump In U.S. Gallons Per Minute (GPM) At Continuous Performance				
P.S.I.	Feet					
58.1	134	400	400	400	400	400
52.0	120	600	760	760	760	760
43.4	100	660	930	1110	1140	1140
34.7	80	680	955	1195	1380	1420
26.0	60	690	960	1200	1440	1530
17.3	40	700	960	1200	1460	1580
8.7	20	701	960	1200	1465	1601
<b>Suction Lift</b>		<b>25'</b>	<b>20'</b>	<b>15'</b>	<b>10'</b>	<b>5'</b>



**PUMP SPECIFICATIONS**

**Size:** 6" x 6" (152 mm x 152 mm) NPT - Female.

**Casing:** Gray Iron 30.

**Maximum Operating Pressure** 96 psi. (662 kPa) \*

**Semi-Open, Two Vane Impeller:** Ductile Iron 65-45-12. Handles 3" (76.2 mm) Diameter Spherical Solids.

**Impeller Shaft:** Stainless Steel 17-4 PH.

**Replaceable Wear Plate:** Carbon Steel ASTM A36.

**Cover Plate:** Gray Iron 30, 36 lbs. (16.3 kg)

**Intermediate:** Gray Iron 30.

**Seal Plate:** Gray Iron 30.

**Seal:**

**(16C2)** Double, Grease-Lubricated w/Spring-Loaded Grease Cup. Sintered Bronze Stationary Seal Seats. Steel Rotating Faces. Neoprene Packing Rings. Maximum Temperature of Liquid Pumped, 110°F (43°C). Maximum Suction Pressure 10 psi (69 kPa) \*.

**(16C20)** Type 2, Mechanical, Oil-Lubricated. Double Floating Self-Aligning. Rotating and Stationary Faces are Tungsten Titanium Carbide. Stainless Steel 316 Stationary Seat. Fluorocarbon Elastomers (DuPont Viton® or Equivalent). Stainless Steel 18-8 Cage and Spring. Maximum Temperature of Liquid Pumped is 160°F (71°C) \*.

**Seal Liner: (16C2)** Copper Alloy C93700.

**Shaft Sleeve: (16C20)** Alloy Steel 4130.

**Flap Valve:** Neoprene w/Steel Reinforcement.

**Radial Bearing:** Open Single Row Ball.

**Thrust Bearing:** Open Double Row Ball.

**Bearing Lubrication:** SAE 30 Non-Detergent Oil.

**Flanges:** Gray Iron 30.

**Gaskets:** Cork, Vegetable Fiber, Buna-N w/Compressed Synthetic Fibers and PTFE.

**Hardware:** Standard Plated Steel.

**Standard Equipment:** Hoisting Bail. Skid Base. 90° Discharge Elbow. Strainer. Oil Level Sight Gauge.

**Optional Equipment:** Battery. Single Axle Pneumatic-Tired Wheel Kit. [Tandem Axle Over-the-Road Trailer](#).

\*Consult Factory for Applications Exceeding Maximum Pressure and/or Temperature Indicated.

**WARNING!**  
Do not use in explosive atmosphere or for pumping volatile flammable liquids.

**ENGINE SPECIFICATIONS**

**Model:** Deutz D914L4.

**EPA Tier:** Interim Tier 4.

**Type:** Four Cylinder, Four Cycle, Air Cooled Diesel Engine.

**Displacement:** 263.2 Cu. In. (4,3 Liters).

**Lubrication:** Forced Circulation.

**Air Cleaner:** Oil Bath.

**Fuel Tank:** 38.9 U.S. Gallons (147.2 Liters)

**Full Load Operating Time:** 13.6 Hour

**Starter:** 12Volt Electric.

**Standard Features:** High Oil Temperature, Low Oil Pressure, V-belt, Alternator And Start Failure Safety Shut Down Switches/Indicators. Fuel Level Gauge. Throttle Control. Instrument Panel Includes: Temperature Gauge, Oil Pressure Gauge, Ammeter, Hourmeter, Tachometer, Start/Stop Key Switch, 15 Amp Fuse. Muffler w/Guard and Weather Cap.

**DEUTZ PUBLISHED PERFORMANCE:**

Maximum Net Continuous B.H.P.  
73.7 (55 kW) @ 2300 RPM



GORMAN-RUPP PUMPS

www.grpumps.com

Specifications Subject to Change Without Notice

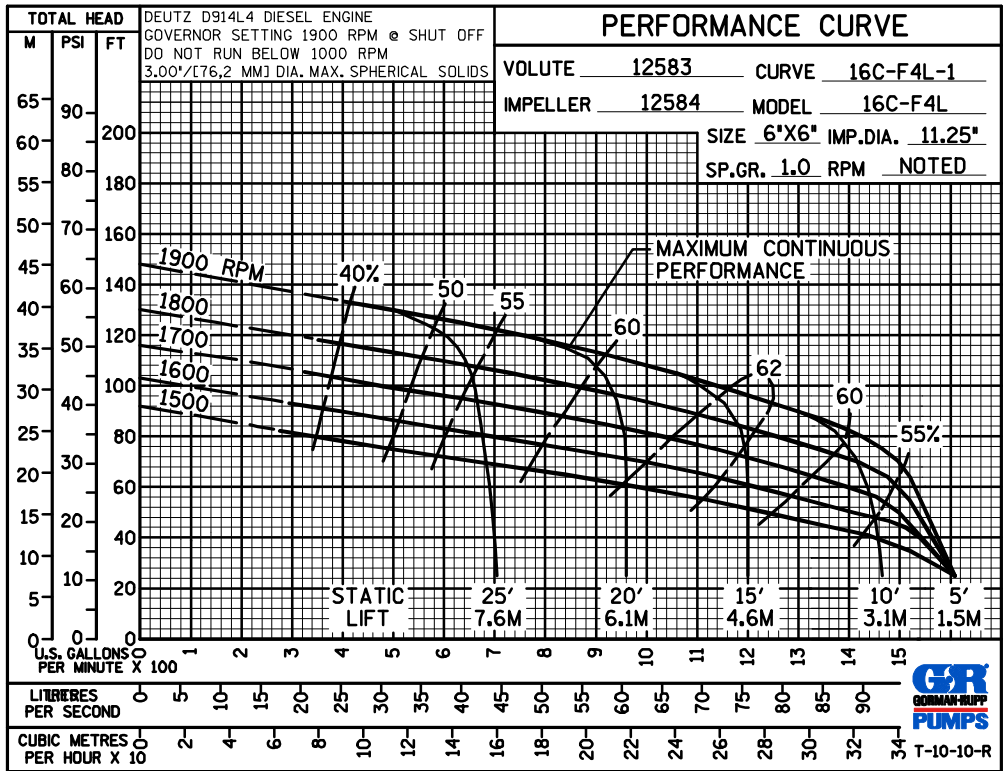
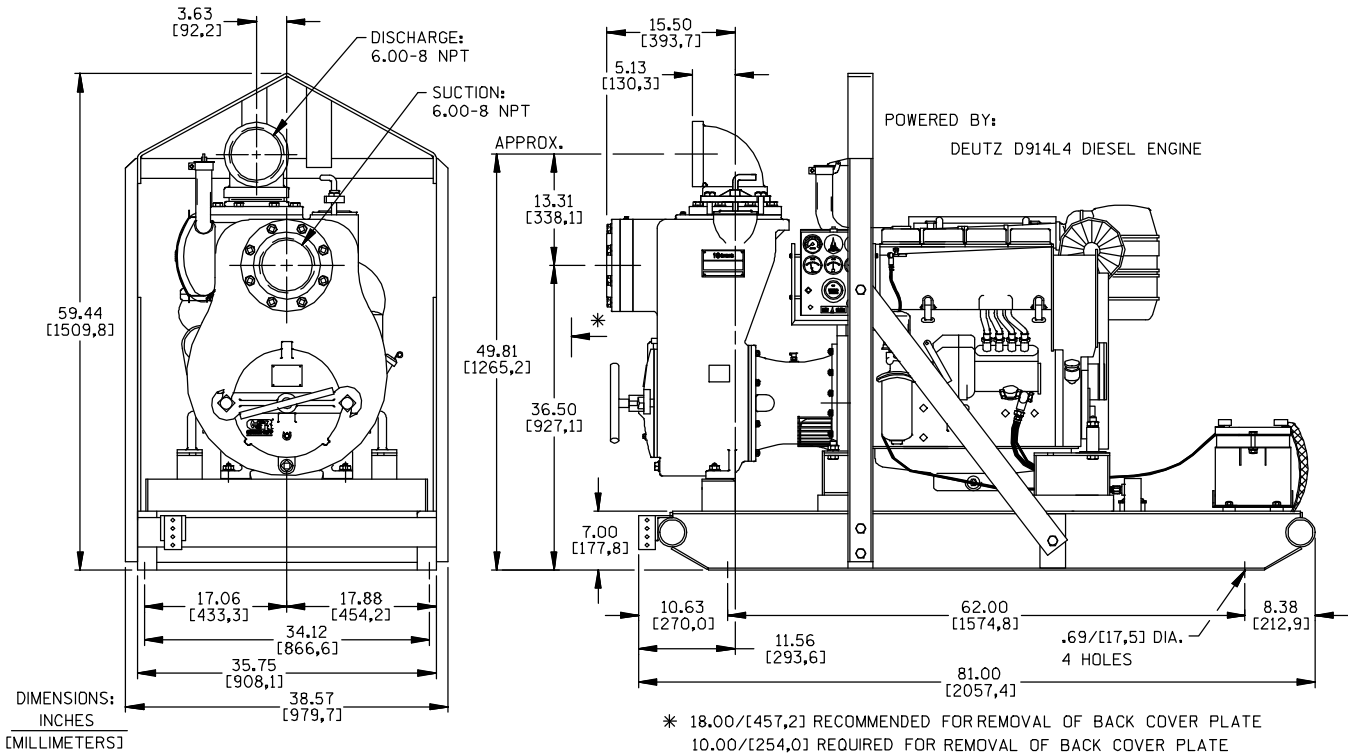
Printed in U.S.A.

**Specification Data**

SECTION 45, PAGE 1500

APPROXIMATE  
DIMENSIONS and WEIGHTS

**SKID BASE**                      **2-WHEEL**  
**NET WEIGHT:**                2325 LBS. [1055 KG.]        2525 LBS. [1145,3 KG.]  
**SHIPPING WEIGHTS:**      2525 LBS. [1145,3 KG.]      2525 LBS. [1145,3 KG.]  
**EXPORT CRATE:**            147 CU. FT. [4.2 CU. M.]



**GORMAN-RUPP PUMPS**

www.grpumps.com

Specifications Subject to Change Without Notice

Printed in U.S.A.