

C



Submersible Pump

Model SM4F1-X20

Size 4"



PUMP SPECIFICATION

MSHA PUMP APPROVAL - 2G-3971A-0.

COMMONWEALTH OF PENNSYLVANIA APPROVAL BFE 36-13.

Diffuser: G-R Hard Iron;

Maximum Operating Pressure 175 psi (1207 kPa).*

Impeller: G-R Hard Iron.

Seal Plate: G-R Hard Iron.

Intermediate: Aluminum Alloy 356-T6.

Casing: Aluminum Alloy 6061-T6 with Chromicoat.

Motor Housing: Aluminum Alloy 356-T6.

Rotor Shaft: Stainless Steel 416.

Shaft Sleeve: Stainless Steel 304.

Bearings: Upper, Two Synthetic Seals, Single Row Ball Bearing.
Lower, Two Shields, Double Row Ball Bearing.

Discharge Flange: Aluminum Alloy 356-T6.

Gaskets: Cork with Nitrile Binder (NC710).

O-Rings: Buna-N.

Wetted Hardware: Standard Plated Steel and Stainless Steel.

Strainer: Urethane Coated Steel; 50.6% Open Area,
0.375" (9.5 mm) Diameter Openings.

Hoisting Bail: Urethane Coated Steel.

Standard Equipment

NEMA Type 10 Explosion Proof Control Box. Provides On-Off,
Circuit Breaker and Motor Overload Protection.

MSHA Certification X/P-3026-1.

Staging Adaptor.

Optional Equipment

MSHA-Certified Automatic Control Box, Single Ball Type Float Switch.**

**Dual Switches and Cable Lengths From 50 to 400 Feet Available.

MOTOR/CABLE SPECIFICATIONS

Motor: Air Filled Enclosure with Thermal Overload Protection; 20 H.P.; 3450 R.P.M.

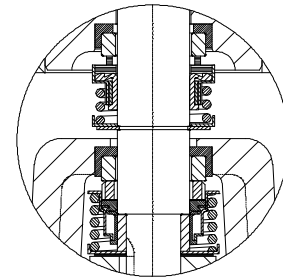
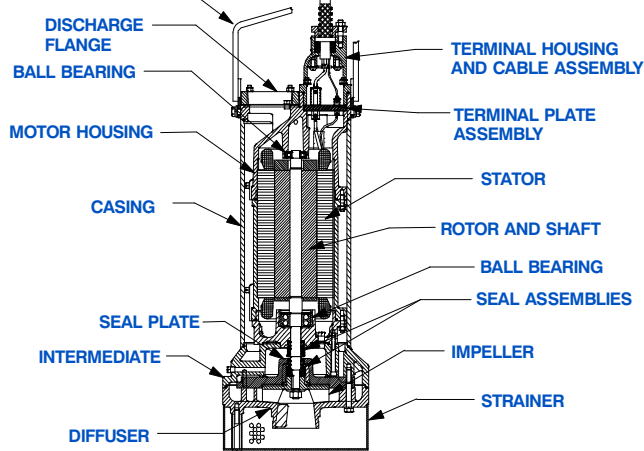
Three Phase: 460/575 Volt, 60 Hz, 26/20.8 Full Load AMPS, 19 kW (Max.)

MSHA Certification X/P-3691-0.

Power Cable: 9 Wire; Type SPC; (3) 8 AWG. Power Conductors, (1) 6 AWG.
Ground Conductor, (4) 14 AWG. Control Conductors and
(1) 8 AWG. Ground Check. Nominal Length 50 Feet (15 m). Standard. (Specify
Alternate Length at Time of Order.)***

*** Circuit Breaker Amp Rating and Maximum Combined Length of Motor and
Trailing Cables May Apply (Consult Factory for Details).

DISCHARGE FLANGE



SEAL SPECIFICATIONS

Tandem, Oil Lubricated.

Upper Seal: Type 21, Mechanical. Carbon Rotating Face.
Ni-Resist Stationary Face. Fluorocarbon Elastomers
(DuPont Viton® or Equivalent). Stainless Steel 18-8
Cage and Spring.

Lower Seal: Type 2, Mechanical. Tungsten Titanium
Carbide Rotating Face and Silicon Carbide Stationary
Face. Fluorocarbon Elastomers (DuPont Viton® or
Equivalent). Stainless Steel 303/304 Cage and Spring.

Maximum Temperature of Liquid Pumped, 122°F (50°C).*

* Consult Factory for Applications Exceeding Maximum
Pressure and/or Temperature Indicated.



THE GORMAN-RUPP COMPANY • MANSFIELD, OHIO

GORMAN-RUPP OF CANADA LIMITED • ST. THOMAS, ONTARIO, CANADA

www.grpumps.com

Specifications Subject to Change Without Notice

Printed in U.S.A.

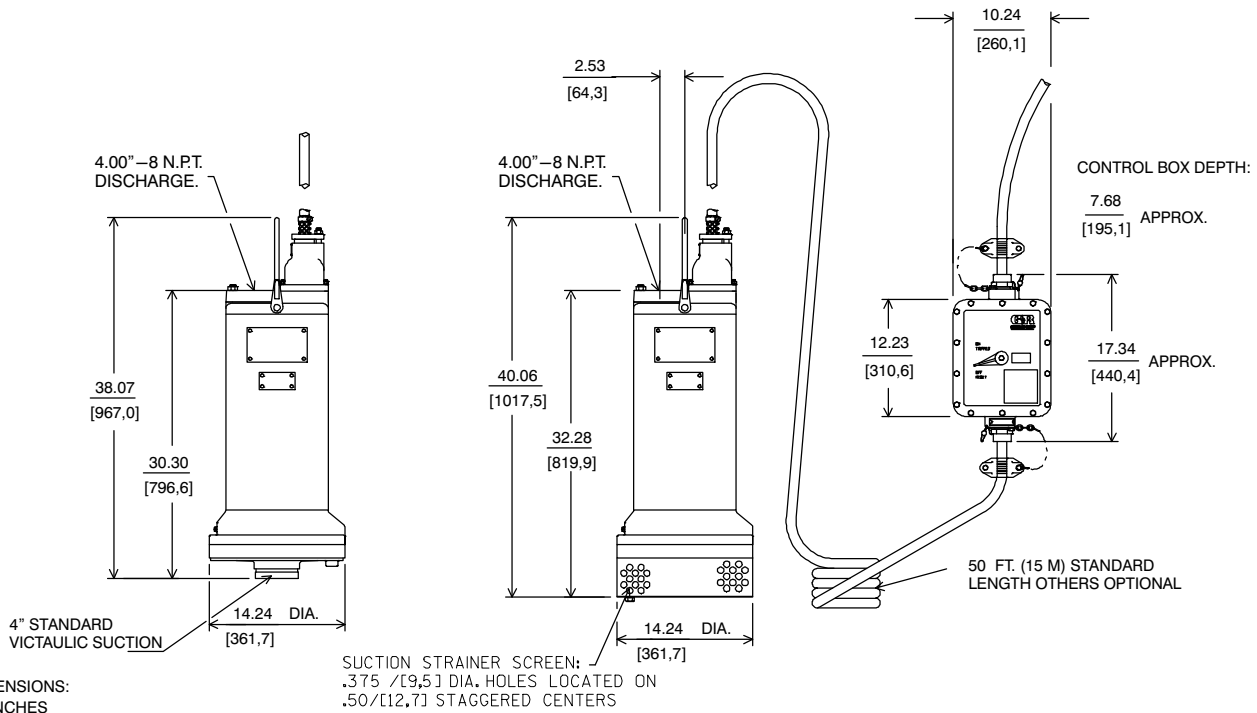
Specification Data

SECTION 132, PAGE 1100

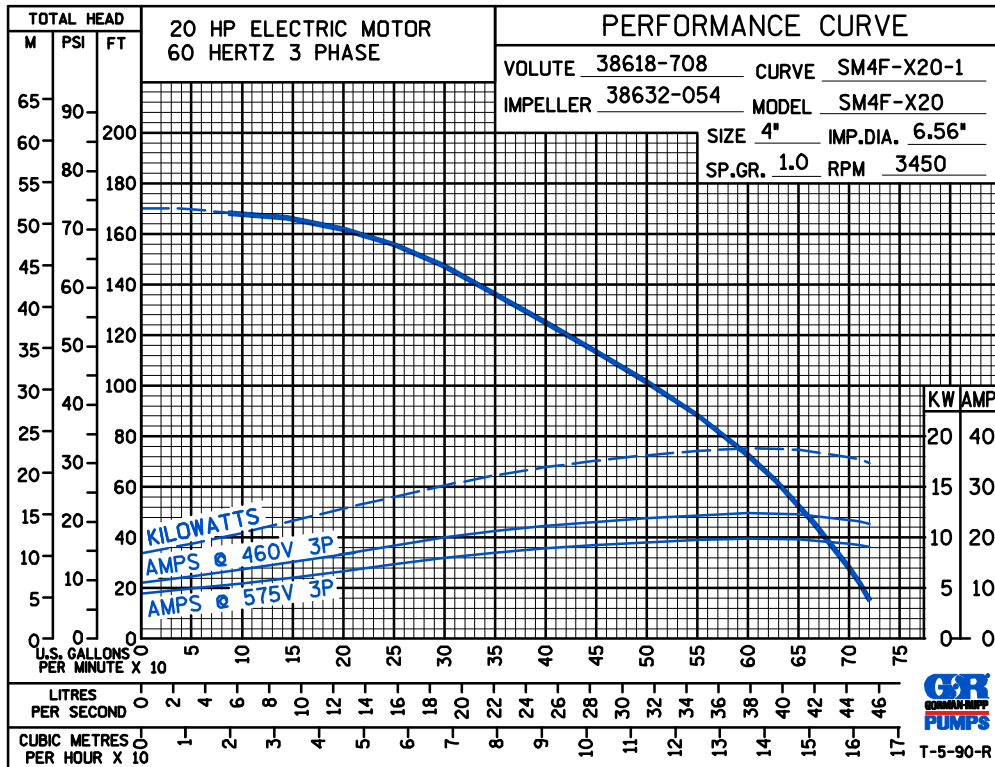
APPROXIMATE
DIMENSIONS and WEIGHTS

PUMP & CABLE NET WEIGHT:
CONTROL BOX; NET WEIGHTS:
GROSS SHIPPING WEIGHT:
EXPORT CRATE:

339 LBS. (153,8 KGS.)
35 LBS. (15,9 KGS.)
394 LBS. (178,7 KGS.)
10 CU. FT. (0,28 CU. M.)



Victaulic is a Registered Trademark of Victaulic Company of America.



THE GORMAN-RUPP COMPANY • MANSFIELD, OHIO

GORMAN-RUPP OF CANADA LIMITED • ST. THOMAS, ONTARIO, CANADA

Specifications Subject to Change Without Notice

Printed in U.S.A.