



Submersible Pump

Model SM4E1-X20

Size 4"



PUMP SPECIFICATIONS

MSHA PUMP APPROVAL - 2G.3971A.0.

COMMONWEALTH OF PENNSYLVANIA APPROVAL BFE 33-13.

Diffuser: Aluminum Alloy 356-T6 w/Urethane Bonded Lining.

Impeller: G-R Hard Iron.

Adjustable Suction Head: Aluminum Alloy 356-T6 w/Urethane Bonded Lining.

Maximum Operating Pressure 175 psi (1206 kPa).*

Seal Plate: Aluminum Alloy 356-T6 w/Urethane Bonded Lining.

Intermediate: Aluminum Alloy 356-T6.

Casing: Aluminum Alloy 6061-T6 w/Chromicoat.

Motor Housing: Aluminum Alloy 356-T6.

Motor Shaft: Stainless Steel 416.

Shaft Sleeve: Stainless Steel 304.

Bearings: Upper, Two Synthetic Seals, Single Row Ball Bearing.
Lower, Two Shields, Double Row Ball Bearing.

Discharge Flange: Aluminum Alloy 356-T6.

Gaskets: Cork with Nitrile Binder (NC710).

O-Rings: Buna-N.

Wetted Hardware: Standard Plated Steel and Stainless Steel.

Strainer: Urethane Coated Steel; 50.6% Open Area,
0.375" (9.5 mm) Diameter Openings.

Hoisting Bail: Urethane Coated Steel.

Standard Equipment

NEMA Type 10 Explosion Proof Control Box Provides On-Off,
Circuit Breaker and Motor Overload Protection.

MSHA Certification No. X/P-3026-1.

Optional Equipment

MSHA-Certified Automatic Control Box, Single Ball Type Float Switch.**

**Dual Switches and Cable Lengths From 50 to 400 Feet Available.

Staging Adaptor Kit.

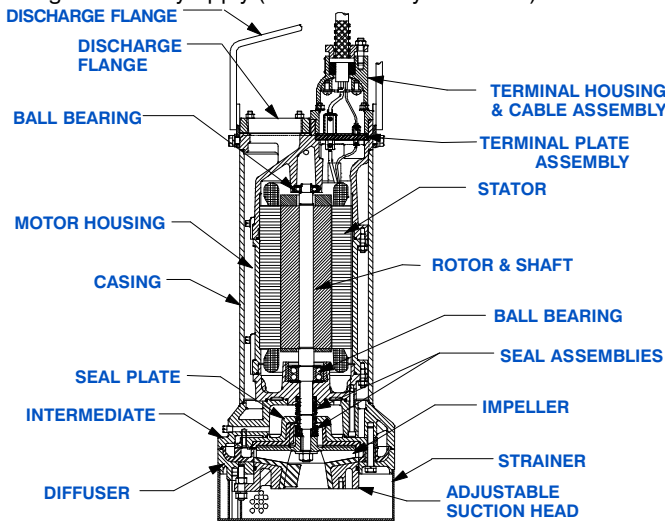
MOTOR/CABLE SPECIFICATIONS

Motor: Air Filled Enclosure with Thermal Overload Protection; 20 H.P.; 3450 R.P.M.
Three Phase: 460/575 Volt, 60 Hz, 26/20.8 Full Load AMPS, 19 kW (Max.)

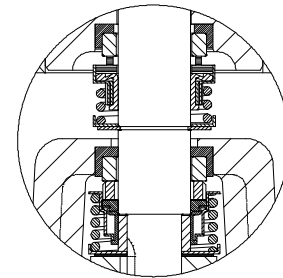
MSHA Certification No. X/P-3691-0.

Power Cable: 9 Wire; Type SPC; (3) 8 AWG. Power Conductors, (1) 6 AWG. Ground
Conductor, (4) 14 AWG. Control Conductors and (1) 8 AWG. Ground Check.
Nominal Length 50 Feet (15 m) Standard. (Specify Alternate Length at Time of
Order)***

*** Circuit Breaker Amp Rating and Maximum Combined Length of Motor and
Trailing Cables May Apply (Consult Factory for Details).



WARNING!
Do not use for pumping volatile flammable liquids.



SEAL SPECIFICATIONS

Tandem, Oil Lubricated.

Upper Seal: Type 21, Mechanical. Carbon Rotating Face.
Ni-Resist Stationary Face. Fluorocarbon Elastomers
(DuPont Viton® or Equivalent). Stainless Steel 18-8
Cage and Spring.

Lower Seal: Type 2, Mechanical. Tungsten Titanium
Carbide Rotating Face and Silicon Carbide Stationary
Face. Fluorocarbon Elastomers (DuPont Viton® or
Equivalent). Stainless Steel 303/304 Cage and Spring.

Maximum Temperature of Liquid Pumped, 122°F (50°C).*

* Consult Factory for Applications Exceeding Maximum
Pressure and/or Temperature Indicated.



THE GORMAN-RUPP COMPANY • MANSFIELD, OHIO

GORMAN-RUPP OF CANADA LIMITED • ST. THOMAS, ONTARIO, CANADA

www.grpumps.com

Specifications Subject to Change Without Notice

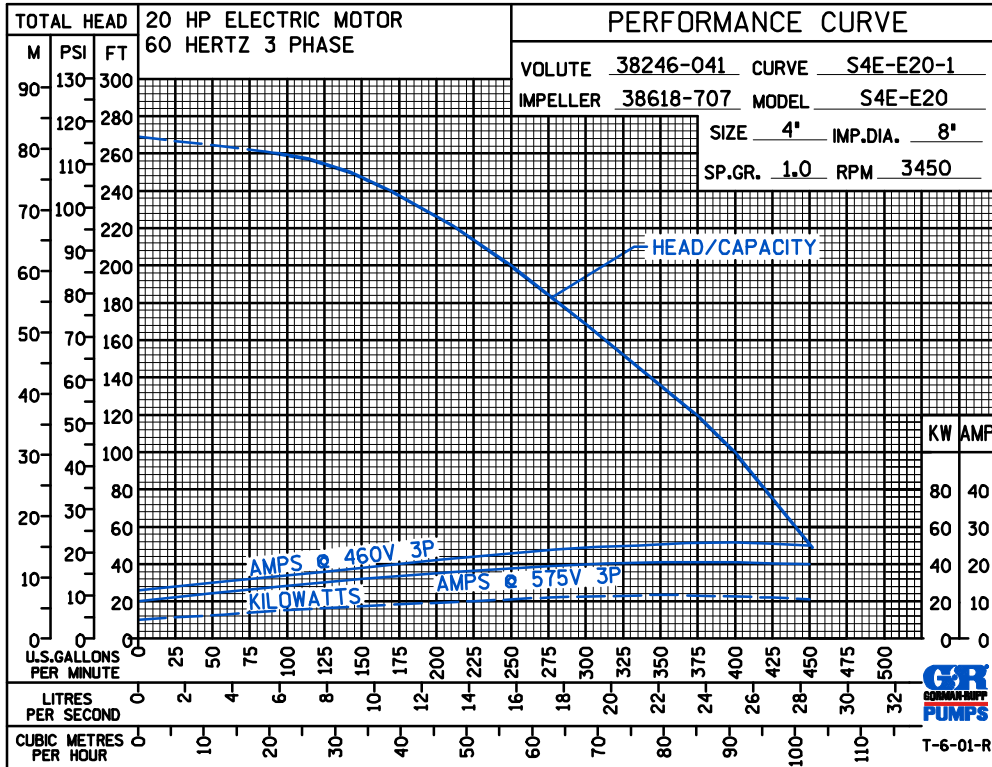
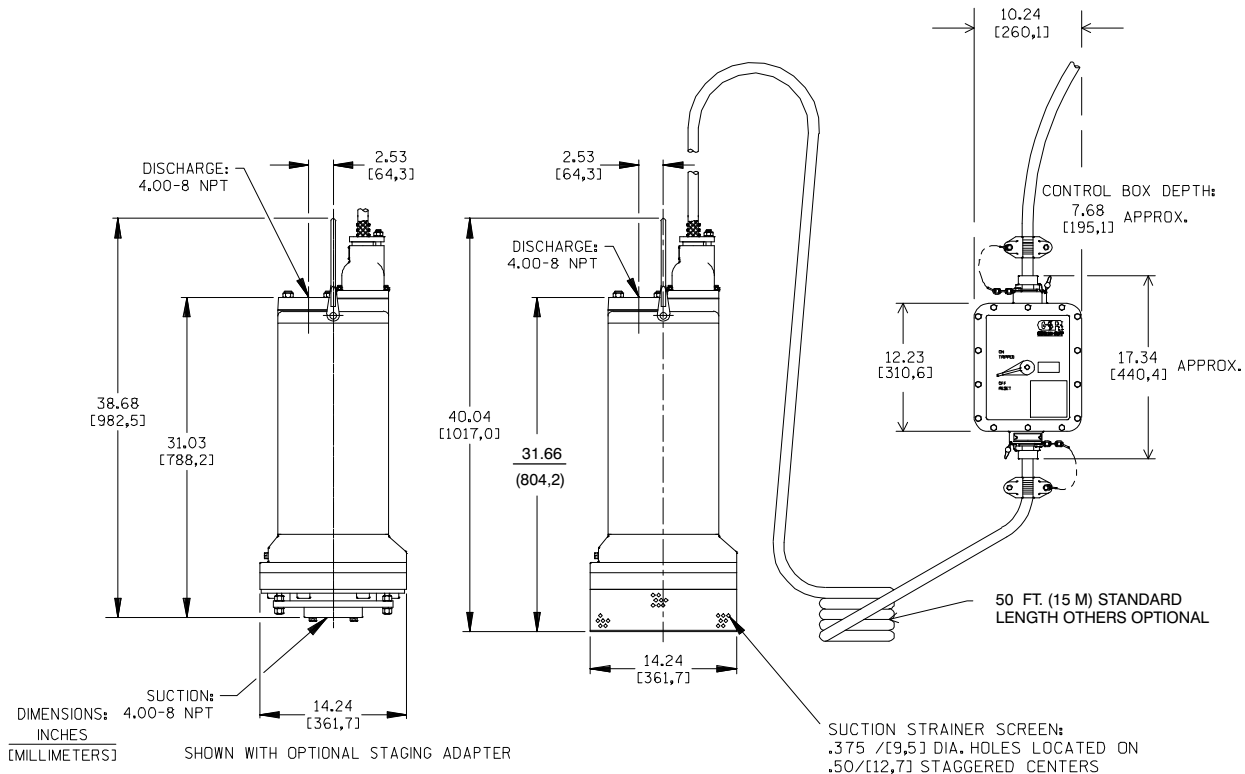
Printed in U.S.A.

Specification Data

SECTION 132, PAGE 1150

APPROXIMATE
DIMENSIONS and WEIGHTS

PUMP & CABLE NET WEIGHT: 305 LBS. (138,3 KG.)
CONTROL BOX NET WEIGHT: 35 LBS. (15,9 KG.)
GROSS SHIPPING WEIGHT: 415 LBS. (188,2 KG.)
EXPORT CRATE: 12 CU. FT. (0,34 CU. M.)



THE GORMAN-RUPP COMPANY • MANSFIELD, OHIO

GORMAN-RUPP OF CANADA LIMITED • ST. THOMAS, ONTARIO, CANADA

Specifications Subject to Change Without Notice

Printed in U.S.A.